

[http://links.vs-service.com/downloads/70-338\\_V02\\_DEEN\\_eddy.pdf](http://links.vs-service.com/downloads/70-338_V02_DEEN_eddy.pdf)

## User Information

### eddy

**Intended use:** eddy is designed as a carrier bag with accessories for use in enclosed rooms. VS will not be liable for non-intended use. Valid for model no. 21990.

Maximum permissible load: 5 kg

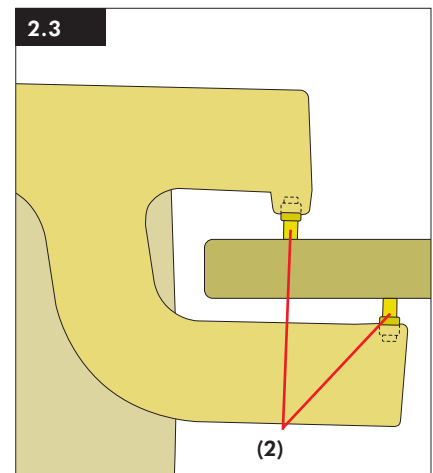
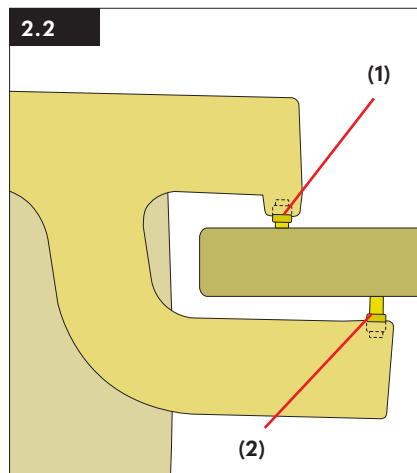
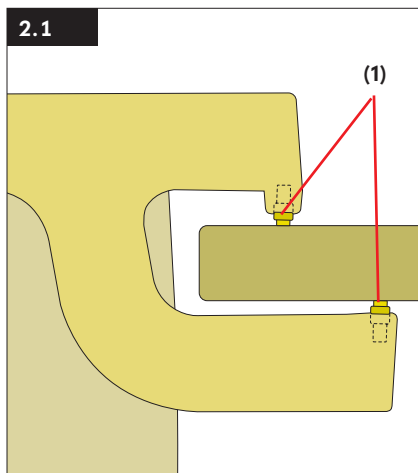
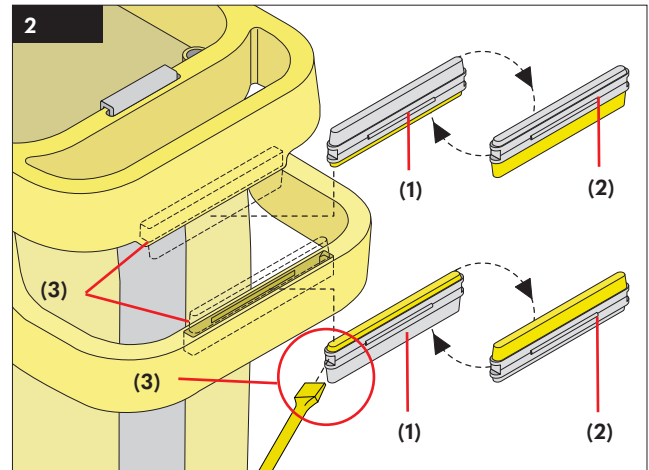
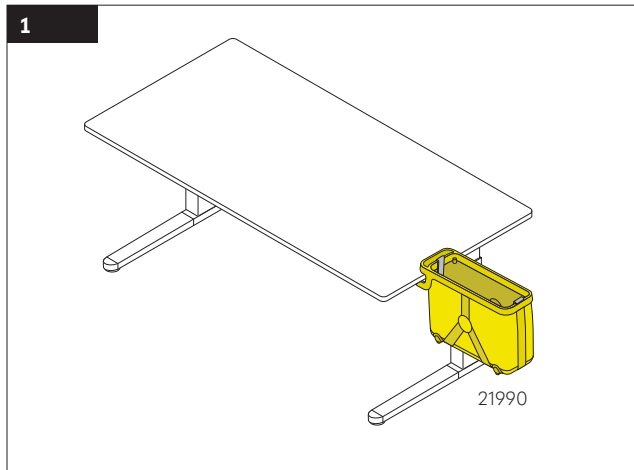
**General note on reading and storing the instructions:** Please read these instructions and in particular the notes on safety carefully and in full before using the products. Keep the instructions in a safe place for subsequent reference and pass them on to other users.

**Troubleshooting and service:** If faults occur, please contact our Aftersales Service [kundenservice@vs-moebel.de](mailto:kundenservice@vs-moebel.de)

**Maintenance and cleaning:** On the Internet: [vs.de/kataloge/reinigung/en](http://vs.de/kataloge/reinigung/en)

**Forwarding:** Also pass on these instructions if the product is forwarded to another party. Contact your local authority for information on environmentally friendly disposal.

**On the internet:** These instructions can be downloaded from the internet (see header).



**Suspending the eddy from the table top:** The eddy is prepared at the factory for use on 25 mm thick table tops. The clamping profiles are clipped into place at the top and bottom with a low protrusion (1) (Fig. 2.1).

You can suspend the eddy immediately from the table top.

The following positions of the clamping profiles are designated for the different table-top thicknesses:

Table-top thickness	Clamping profile		
	top	bottom	
25 mm	low	low	(Fig. 2.1)
19 mm	high	low	(Fig. 2.2)
16 mm	high	high	(Fig. 2.3)
13 mm	high	high	(Fig. 2.3)

**Changing the clamping profiles: (Fig. 2)** Place a screwdriver in the notch on the end face (3) of the clamping profiles and lever off the clamping profiles. If necessary, turn the clamping profiles as suggested in the table for the table-top thickness and clip into place again. The eddy can be suspended at a slight angle from the table, depending on the table-top thickness and load.