



**ORDER FORM FOR SPARE PARTS** 45-076-16 V05 - 25.01.2024 - www.vs-moebel.de

## Accessories for containers and sideboards from the OfficeBox and Serie 901 product families.

Extend the functionality of your container and the organization of your personal writing materials and documents. The containers can be upgraded with a materials tray, dividers, adjustable suspension frame, form holders and card indexes with dividers. When choosing and ordering your material, please note the depth and width of your container as well as the height units for the drawers/front covers (1 HU = 50 mm).

### OfficeBox

40100 - 40452 until 2016 Width 44.7 cm

40500 - 40518 as of 2016 Width 43 cm

40530 - 40535 as of 2016 Width 33 cm (half-size)

### Serie 901 Sideboard

21636 - 21679

### Serie 900 Sideboard

02680 - 02711

### Note:

To identify your model, please note the label with the order (AB) and model number and week of delivery (LW) on the back of the OfficeBox.

### Please note the following markings:

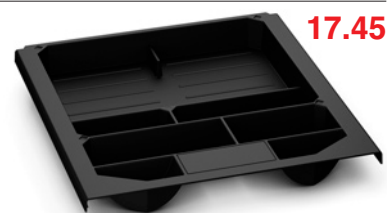
blue = product family no longer available for delivery

### Orga-Sets no. 1-11:

- no. 1** contains 1x 40570 suitable for 45000, 40503, 21638, 21639, 21664, 21665, 21672, 21673
- no. 2** contains 2x 40570, 1x 40584 suitable for 45001, 40502, 40504, 40505, 21666, 21667, 21674, 21675
- no. 3** contains 2x 40570 suitable for 40510, 40513, 21637
- no. 4** contains 4x 40570, 1x 40583 suitable for 40511, 40512, 40514, 40515, 21636
- no. 5** contains 4x 40570 suitable for 40517
- no. 6** contains 6x 40570, 1x 40583 suitable for 40518
- no. 7** contains 1x 40571 suitable for 40520, 40523
- no. 8** contains 2x 40571 suitable for 40530, 40533
- no. 9** contains 3x 40571 suitable for 40521, 40522, 40524, 40525
- no. 10** contains 6x 40571 suitable for 40531, 40532, 40534, 40535
- no. 11** contains 3x 40570, 1x 40584 suitable for 21678, 21679

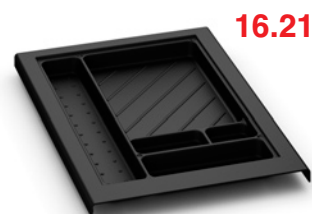
**80-468-00**  
**Large material tray for flat drawer, W=43 cm**

is inserted in the telescopic guide of the flat drawer  
W/D 380 x 392 mm



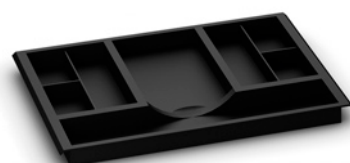
**80-469-00**  
**Large material tray for flat drawer, W=33 cm (half-size)**

is inserted in the telescopic guide of the flat drawer  
W/D 280 x 292 mm



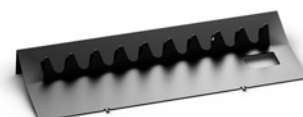
**40577**  
**Small material tray for drawer, W=43 cm**

is placed at the side panels of the drawer (metal tray)  
for drawers with a front panel of height at least 2 HU or 10 cm  
W/D 345 x 232 mm



**40578**  
**Stamp holder for drawer, W=43 cm**

is clamped between the side panels of the drawer (metal tray)  
for drawers with a front panel of height at least 2 HU or 10 cm  
W/D 330 x 115 mm



**40570**  
**Partition for drawer, W=43 cm**

is clamped between the side panels of the drawer (metal tray)  
for drawers with a front panel of height at least 2 HU or 10 cm  
W/H 330 x 80 mm



**40571**  
**Partition for drawer, W=33 cm (half-size)**

is clamped between the side panels of the drawer (metal tray)  
for drawers with a front panel of height at least 2 HU or 10 cm  
W/H 230 x 80 mm



**40572**  
**DIN A4 divider**

can be used in combination with the partitions 40570 or 40571  
W/H 310 x 80 mm



**40573**  
**DIN A5 divider**

can be used in combination with the partitions 40570 or 40571  
W/H 220 x 80 mm



**40574**  
**DIN A6 divider**

can be used in combination with the partitions 40570 or 40571  
W/H 150 x 80 mm

**5.90**



**40575**  
**DIN A7 divider**

can be used in combination with the partitions 40570 or 40571  
W/H 110 x 80 mm

**5.51**



**40579**  
**long adjustable suspension frame for drawer D=80/W=43 cm**

W/D/H 334 x 695 x 253 mm is placed in the drawer's metal tray  
for drawers with a front panel of height at least 6 HU or 30 cm  
for containers W/D 43 x 77cm

**29.43**



**40580**  
**Short adjustable suspension frame for drawer D=60/W=43 cm**

W/D/H 334 x 488 x 253 mm is placed in the drawer's metal tray  
for drawers with a front panel of height at least 6 HU or 30 cm  
for containers W/D 43 x 57cm

**26.54**



**40581**  
**Long adjustable suspension frame for drawer D=80/W=33 cm (half-size)**

W/D/H 234 x 689 x 253 mm is placed in the drawer's metal tray  
for drawers with a front panel of height at least 6 HU or 30 cm  
for containers W/D 33 x 77cm

**56.51**



**40582**  
**Short adjustable suspension frame for drawer D=60/W=33 cm (half-size)**

W/D/H 234 x 482 x 253 mm is placed in the drawer's metal tray  
for drawers with a front panel of height at least 6 HU or 30 cm  
for containers W/D 33 x 57cm

**44.63**



**40583**  
**Long adjustable suspension frame for drawer D=80/W=43 cm**

W/D/H 326 x 678 x 120 mm is placed in the drawer's metal tray  
for drawers with a front panel of height at least 3 HU or 15 cm  
for containers W/D 43 x 77cm

**43.28**



**40584**  
**Short form holder for drawer D=60/W=43 cm**

W/D/H 326 x 486 x 120 mm is placed in the drawer's metal tray  
for drawers with a front panel of height at least 3 HU or 15 cm  
for containers W/D 43 x 57cm

**29.39**



**40585**  
**DIN A4 card index, transverse**

W/D/H 318 x 324 x 217 mm is placed in the drawer's metal tray  
for drawers with a front panel of height at least 6 HU or 30 cm



**50.53**

**40586**  
**DIN A5 card index, transverse**

W/D/H 228 x 324 x 155 mm is placed in the drawer's metal tray  
for drawers with a front panel of height at least 4 HU or 20 cm



**47.70**

**40587**  
**DIN A6 card index, transverse**

W/D/H 168 x 324 x 112 mm is placed in the drawer's metal tray  
for drawers with a front panel of height at least 3 HU or 15 cm



**46.13**

**40588**  
**DIN A4 divider, transverse**

W/H 317 x 210 mm, is inserted in card index 40585



**9.44**

**40589**  
**DIN A5 divider, transverse**

W/H 227 x 148 mm, is inserted in card index 40586



**8.65**

**40590**  
**DIN A6 divider, transverse**

W/H 167 x 105 mm, is inserted in card index 40587



**7.89**