



**Spare parts order form**

**JUMPER Air Move**

**JUMPER Air Move** (Students' chairs)  
33501, 33502, 33506, 33530<sup>T</sup>, 33533<sup>T</sup>

**JUMPER Air Move** (Students' chairs with foot ring)  
33502, 33503, 33506

**JUMPER Air Move** (Teachers/Nursery school)  
33537, 33538<sup>P</sup>

**JUMPER Air Move** (Multipurpose chairs)  
33510, 33512<sup>P</sup>, 33513<sup>A</sup>, 33515<sup>AP</sup>, 33517<sup>P</sup>

**JUMPER Air Move** (Multipurpose chairs Plus)  
33520, 33522<sup>P</sup>, 33523<sup>A</sup>, 33525<sup>AP</sup>, 33526, 33527<sup>P</sup>

**DIN EN 1729** (Students' chairs)

h = 350	● Size class 3	VS seat shell size M
h = 380	● Size class 4	VS seat shell size M
h = 430	● Size class 5	VS seat shell size M L
h = 460	● Size class 6	VS seat shell size L
h = 510	● Size class 7	VS seat shell size L

**Note:**

You can see which model your chair is by the sticker on the underside of the seat shell (with order number/ AB number, model number and delivery week/LW). Pupil chairs are colour-coded according to DIN EN 1729.

**Please note the following markings:**

- A = Model with armrests
- P = Model with upholstery
- T = Model with board



**Caution:** Spare parts identified by this sign may only be assembled and disassembled by specialist personnel!  
Only dismount gas springs when they are extended! We recommend that changes should be performed by our VS Customer Service.

**Glide element** (pictured: Glide element, height ≈ 3,5 cm)



## The right glide element for the JUMPER Air Move.

The glide elements used for chairs must be compatible with the floor covering. Otherwise, damage may be caused to the floor as, for example, in the case of the combination of plastic glide element and elastic floor covering. That is why we have worked together with the flooring manufacturer Armstrong DLW AG to develop the 2-component glide element for plastic floor coverings. Although this is also suitable for other floor coverings, it is nevertheless not always the optimum solution. Below you will find an overview of which glide element is recommended for which floor covering.

Floor covering	Optimum glide element	Alternative glide element
<b>soft:</b> - Carpet - Needle felting	<b>Plastic glide element</b>	<b>2-component glide element</b> but with reduced glide properties
<b>elastic:</b> - Linoleum - PVC - Rubber	<b>2-component glide element</b>	<b>Felt glide element</b> Regular cleaning necessary, e.g. with hard brush
<b>very hard:</b> - Parquet - Tiles, natural stone, stoneware - Sealed floor screed	<b>Felt glide element</b>	<b>2-component glide element</b>

**Caution:** Glide elements are wear parts and are therefore not covered by the unit's warranty. Worn, very dirty or missing glide elements can damage floor coverings. To ensure correct operation, we recommend that you examine the glide elements at appropriate intervals and replace them if necessary.

**ET0049 37.27**

**Dual castors, ø 5 cm, soft**

for Students' chairs: 33501, 33502, 33503, 33506, 33530, 33533  
for Teachers/Nursery school: 33537, 33538  
for Multipurpose chairs: 33517  
universal, for all hard and elastic floors, contents: 5 units for 1 chair



**ET0050 37.27**

**Dual castors, ø 5 cm, hard**

for Students' chairs: 33501, 33502, 33503, 33506, 33530, 33533  
for Teachers/Nursery school: 33537, 33538  
for Multipurpose chairs: 33517  
for long-pile carpeted floors, contents: 5 units for 1 chair



**ET0254 37.27**

**Dual castors, ø 6.5 cm, soft**

for Multipurpose chairs: 33510, 33512, 33513, 33515  
universal, for all hard and elastic floors  
Contents: 5 units for 1 chair



**ET0253 37.27**

**Dual castors, ø 6.5 cm, hard**

for Multipurpose chairs: 33510, 33512, 33513, 33515  
for long-pile carpeted floors  
Contents: 5 units for 1 chair



**ET0458 37.27**

**Dual castors (with brakes), ø 5 cm, soft**

for Students' chairs: 33503, 33526, 33527  
for Multipurpose chairs: 33520, 33522, 33523, 33525  
universal, for all hard and elastic floors, contents, castors are braked under load  
Contents: 5 units for 1 chair



**ET0521 10.15**

**Plastic glide element, H ≈ 3.5 cm**

for Students' chairs: 33501, 33502, 33503, 33506, 33527, 33530, 33533  
for Teachers/Nursery school: 33537, 33538  
for Multipurpose chairs: 33517  
for carpeted floors, contents: 5 units for 1 chair



**ET0522 11.42**

**Felt glide element, H ≈ 3.5 cm**

for Students' chairs: 33501, 33502, 33503, 33506, 33527, 33530, 33533  
for Teachers/Nursery school: 33537, 33538  
for Multipurpose chairs: 33517  
for all hard and soft floors, contents: 5 units for 1 chair



**ET0523 12.05**

**2-component glide element, H ≈ 3.5 cm**

for Students' chairs: 33501, 33502, 33503, 33506, 33527, 33530, 33533  
for Teachers/Nursery school: 33537, 33538  
for Multipurpose chairs: 33517  
universal for all floors, contents: 5 units for 1 chair



**ET0250 11.42**

**Plastic glide element, H ≈ 5.9 cm**

for Multipurpose chairs: 33510, 33512, 33513, 33515, 33520, 33522, 33523, 33525  
for carpeted floors

Contents: 5 units for 1 chair



**ET0251 15.22**

**Felt glide element, H ≈ 5.9 cm**

for Multipurpose chairs: 33510, 33512, 33513, 33515, 33520, 33522, 33523, 33525  
for all hard and soft floors

Contents: 5 units for 1 chair



**ET0252 17.76**

**2-component glide element, H ≈ 5.9 cm**

for Multipurpose chairs: 33510, 33512, 33513, 33515, 33520, 33522, 33523, 33525  
universal for all floors

Contents: 5 units for 1 chair



**ET0588 44.41**

**Air shell M for size 3-5**

for Students' chairs: 33502, 33503

Contents: 1 unit, with fixing material

Colours, see last page



**ET0589 50.74**

**Air shell L for size 5-7 and 6**

for Students' chairs: 33501, 33506, 33526, 33530, 33533

for Teachers/Nursery school: 33537

Contents: 1 unit, with fixing material

Colours, see last page



**ET0590 57.09**

**Air shell XL for size 5-7 and Multi-purpose**

for Multipurpose chairs: 33510 33513 33520 33523

Contents: 1 unit, with fixing material

Colours, see last page



**ET0637 21.31**

**Air shell M fixing set for size 3-5**

for Students' chairs: 33502, 33503

Contents: 5 sets (1x left, 1x centre, 1x right), with fixing material, for 5 chairs



**ET0638 21.31**

**Air shell L and XL fixing set for size 5-7**

for Students' chairs: 33501, 33506, 33526, 33527, 33530, 33533

for Teachers/Nursery school: 33537, 33538

for Multipurpose chairs: 33510, 33512, 33517, 33520, 33522

Contents: 5 sets (1x left, 1x centre, 1x right), with fixing material, for 5 chairs



**ET0539 11.42**

**Piggy-back chair suspension for models without 3D rocker mechanism**

for Students' chairs: 33501, 33502, 33503, 33506

for Teachers/Nursery school: 33537, 33538

Contents: 1 unit (also suitable for retrofitting)



**ET0539 12.56**

**Piggy-back chair suspension for models with 3D rocker mechanism**

for Students' chairs: 33501, 33502, 33503, 33506

for Teachers/Nursery school: 33537, 33538

Contents: 1 unit (also suitable for retrofitting)



**ET0051 7.99**

**Cap for gas spring**

for Students' chairs: 33501, 33502, 33503, 33506, 33526, 33527, 33530, 33533

for Teachers/Nursery school: 33537, 33538

for Multipurpose chairs: 33510, 33512, 33513, 33515, 33517, 33520, 33522, 33523, 33525

Contents: 5 units



**09091-1197 2.34**

**Safety clamp set for gas spring**

for Students' chairs: 33501, 33502, 33503, 33506, 33526, 33527, 33530, 33533

for Teachers/Nursery school: 33537, 33538

for Multipurpose chairs: 33510, 33512, 33513, 33515, 33517, 33520, 33522, 33523, 33525

Contents: 1 set for 1 chair (1x pad, 1x axial bearing, 1x washer, 1x clip)



**ET0492 16.65**

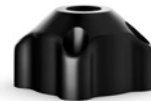
**Release head for height adjustment without 3D rocker mechanism**

for Students' chairs: 33501, 33502, 33503, 33506, 33526, 33527, 33530, 33533

for Teachers/Nursery school: 33537, 33538

for Multipurpose chairs: 33510, 33512, 33513, 33515, 33517, 33520, 33522, 33523, 33525

Contents: 1 unit



**ET0490 5.30**

**Release lever for models with 3D rocker mechanism**

for Students' chairs: 33501, 33503, 33506, 33526, 33527, 33530, 33533

for Teachers/Nursery school: 33537, 33538

for Multipurpose chairs: 33510, 33512, 33513, 33515, 33517, 33520, 33522, 33523, 33525

Contents: 1 unit



**ET0491 5.13**

**Release lever for models without 3D rocker mechanism**

for Students' chairs: 33501, 33502, 33503, 33506, 33526, 33527, 33530, 33533

for Teachers/Nursery school: 33537, 33538

for Multipurpose chairs: 33510, 33512, 33513, 33515, 33517, 33520, 33522, 33523, 33525

Contents: 1 unit



**ET0810 6.35**

**Plastic sleeve for release lever (ET0491) without 3D rocker mechanism**

for Students' chairs: 33501, 33502, 33503, 33506, 33526, 33527, 33530, 33533,

for Teachers/Nursery school: 33537, 33538

for Multipurpose chairs: 33510, 33512, 33513, 33515, 33517, 33520, 33522, 33523, 33525

Contents: 40x units suitable for 20 chairs



**ET0834** **69.77**

**3D rocker mechanism (Air shell), soft for size 3-5**

for Students' chairs: 33502, 33503

Contents: 1 unit, with seat support and piggy-back chair suspension



**ET0835** **69.77**

**3D rocker mechanism (Air shell), medium for size 5-7**

for Students' chairs: 33506, 33526

for Teachers/Nursery school: 33537, 33538

for Multipurpose chairs: 33517, 33527

Contents: 1 unit, with seat support and piggy-back chair suspension



**ET0833** **69.77**

**3D rocker mechanism (Air shell), hard for size 5-7**

for Multipurpose chairs: 33510, 33512, 33520, 33522, 33533

Contents: 1 unit, with seat support



**ET0836** **104.00**

**3D rocker mechanism (Air shell), hard for size 5-7, with armrests**

for Multipurpose chairs: 33513, 33515, 33523, 33525

Contents: 1 unit, with seat support



**ET0849** **11.42**

**Arm support**

for Multipurpose chairs: 33513, 33515, 33523, 33525

Contents: 1 set (1x left, 1x right), with fixing material



**ET0304** **46.62**

**Star foot, small, stabilizer length 255 mm for size 3-5**

for Students' chairs: 33502

Colour specification required: Standard = 059 arctic, for colours, see last page



**ET0301** **51.94**

**Star foot, medium, stabilizer length 295 mm for size 5-7**

for Students' chairs: 33501, 33503, 33506, 33526

for Teachers/Nursery school: 33537, 33538

for Multipurpose chairs: 33517, 33527

Colour specification required: Standard = 059 arctic, for colours, see last page



**ET0249** **54.47**

**Star foot, large, stabilizer length 328 mm for Multi-purpose chair**

for Students' chairs: 33530, 33533

for Multipurpose chairs: 33510, 33512, 33513, 33515, 33520, 33522, 33523, 33525

Colour specification required: Standard = 059 arctic, for colours, see last page



**ET0513 41.95**

**Gas spring, ø 40 mm**

for Students' chairs: 33506

for Multipurpose chairs: 33510, 33512, 33513, 33517

Contents: 1 unit



**ET0511 39.95**

**Gas spring, ø 40 mm**

for Students' chairs: 33502, 33533

for Teachers/Nursery school: 33537, 33538

Contents: 1 unit



**ET0518 45.30**

**Gas spring, ø 40 mm**

for Students' chairs: 33503

Contents: 1 unit



**ET0528 106.53**

**Gas spring with foot ring, pre-assembled**

for Students' chairs: 33502

Contents: 1 unit



**ET0530 106.53**

**Gas spring with foot ring, pre-assembled**

for Students' chairs: 33506, 33517

Contents: 1 unit



**ET0532 106.53**

**Gas spring with foot ring, pre-assembled**

for Multipurpose chairs: 33520, 33522, 33523, 33525, 33526, 33527

Contents: 1 unit



**ET0533 106.53**

**Gas spring with foot ring, pre-assembled**

for Students' chairs: 33503

Contents: 1 unit



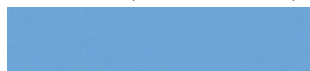
## Plastic colour



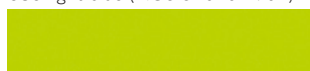
**027** dark red (NCS S 2570-R)



**029** dark blue (NCS S 6030-R80B)



**030** light blue (NCS S 1040-R90B)



**033** light green (NCS S 1070-G60Y)



**041** turquoise (RAL 210 40 20)



**045** broom yellow (RAL 1032)



**037** traffic red (RAL 3020)

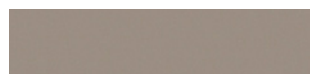


**073** black grey (RAL 7021)

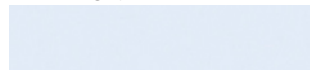


**078** dolphin grey (NCS S 4500-N)

## Metal surfaces



**030** terra grey (NCS S 4005-Y50R)



**032** light blue (NCS S 0515-R80B)



**033** light green (NCS S 1060-G70Y)



**041** turquoise (RAL 210 40 20)



**045** broom yellow (RAL 1032)



**059, 159** arctic



**063** anthracite



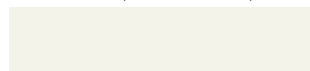
**065** black (NCS S 8505-G20Y)



**071** sapphire blue (RAL 5003)



**084** oxblood (NCS S 3650-R)



**091** white (RAL 9016)