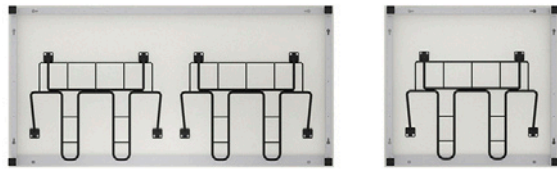




EcoTable-Q (rectangular table)



EcoTable-Q (rectangular table) with chair suspension



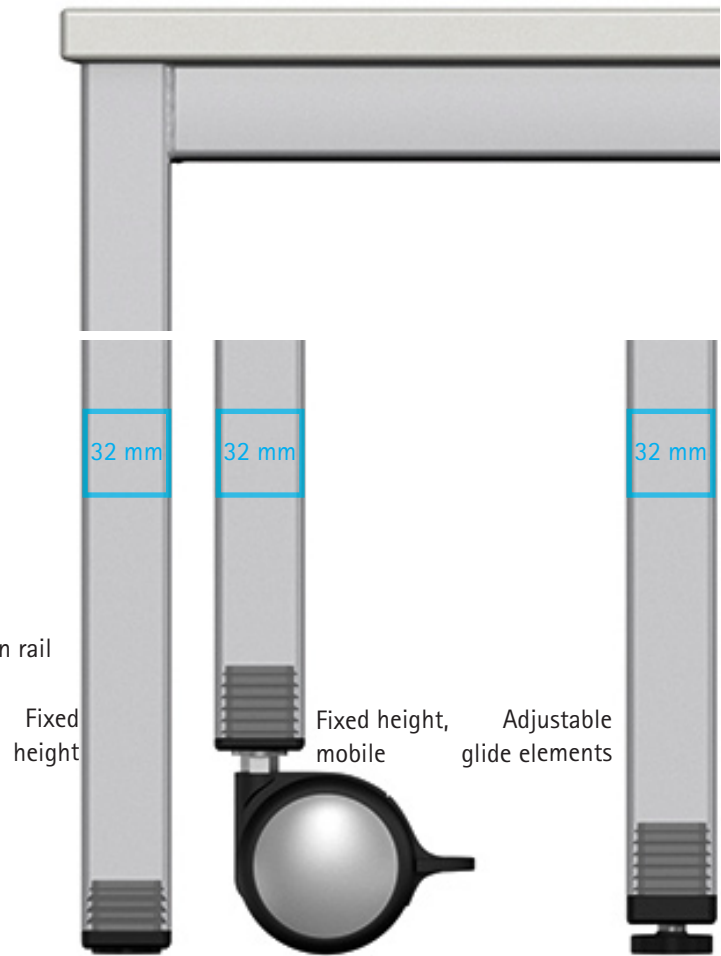
EcoTable-Q (rectangular table) with universal suspension rail



EcoTable-Q (rectangular table) with Gratnells boxes

2-seater table

1-seater table



ORDER FORM FOR SPARE PARTS 45-078-90 V06 - 25.01.2024 - www.vs-moebel.de

EcoTable-Q.

EcoTable-Q (Students' tables) trapezoidal table
 for model 23100, 23101, 23102, 23103, 23105, 23106,
 23107, 23108, 23110, 23111, 23113

EcoTable-Q (Students' tables) trapezoidal table
 for model 23114, 23179, 23189

EcoTable-Q (Students' tables) semicircular table
 for model 23115, 23178, 23188

EcoTable-Q (Students' tables) circular table
 for model 23150, 23151, 23153

EcoTable-Q (Teachers' tables)
 for model 23120, 23121, 23122, 23130, 23131, 23132,
 23133, 23134, 23135, 23137

EcoTable-Q (Multipurpose tables)
 for model 23105, 23106, 23107, 23108, 23164, 23165,
 23166, 23167, 23170, 23171, 23172, 23173, 23174, 23175,
 23176, 23177, 23181, 23182, 23183, 23184, 23185, 23186,
 23187, 23191, 23193, 23194, 23195, 23196, 23197

Note:

You can find out the model of your table by looking at the label on the bottom of the table top (with order/order confirmation number, model number (AB) and week of delivery (LW)).

DIN EN 1729 (Student's desks)

- h = 400 ○ Size class 0
- h = 520 ● Size class 2
- h = 590 ● Size class 3
- h = 640 ● Size class 4
- h = 710 ● Size class 5
- h = 760 ● Size class 6
- h = 820 ● Size class 7

ET0758

Plastic glide element

for chipboard table top (19 mm and 25 mm)
for all EcoTables
Content: 20 units

18.70



ET0760

Felt glide element

for chipboard table top (19 mm and 25 mm)
for all EcoTables
Contents: 20 units

43.62



ET0759

2-component glide element

for chipboard table top (19 mm and 25 mm)
for all EcoTables
Contents: 20 units

31.16



ET0763

Plastic glide element

for solid HPL top (13 mm)
for all EcoTables
Contents: 20 units

18.70



ET0765

Felt glide element

for solid HPL top (13 mm)
for all EcoTables
Contents: 20 units

43.62



ET0764

2-component glide element

for solid HPL top (13 mm)
for all EcoTables
Contents: 20 units

31.16



ET0761

Plug with adjusting screw and plastic glide element

for chipboard table top (19 mm and 25 mm)
for all EcoTables
Contents: 20 units

43.62



ET0762

Plug with adjusting screw and felt glide element

for chipboard table top (19 mm and 25 mm)
for all EcoTables
Contents: 20 units

68.54



ET0766
Plug with adjusting screw and plastic glide element

for solid HPL top (13 mm)
for all EcoTables
Contents: 20 units



ET0767
Plug with adjusting screw and felt glide element

for solid HPL top (13 mm)
for all EcoTables
Contents: 20 units



ET0702
Plug with metal internal thread M10

for chipboard table top (19 mm and 25 mm)
for all EcoTables
Contents: 10 units



ET0703
Plug with metal internal thread M10

for solid HPL top (13 mm)
for all EcoTables
Contents: 10 units



ET0791
Adjusting screw M10x30 with plastic glide element

for all EcoTables
Contents: 10 units



ET0792
Adjusting screw M10x30 with felt glide element

for all EcoTables
Contents: 10 units



ET0768
Castor (ø 65 mm) with plug

for chipboard table top (19 mm and 25 mm)
for all EcoTables
Contents: 2 castors with and 2 castors without lock, with fixing material



ET0769
Castor (ø 65 mm) with plug

for solid HPL top (13 mm)
for all EcoTables
Contents: 2 castors with and 2 castors without lock, with fixing material



ET0266

Castor (ø 65 mm)

for all EcoTables with plugs

Contents: 2 castors with and 2 castors without lock

36.14



ET0770

Plastic glide element-castor combination

for chipboard table top (19 mm and 25 mm)

for all EcoTables with 2 shortened legs for fitting castors

Contents: Glide elements and castors, with fixing material, sufficient for one table

24.93



ET0772

Felt glide element-castor combination

for chipboard table top (19 mm and 25 mm)

for all EcoTables with 2 shortened legs for fitting castors

Contents: Glide elements and castors, with fixing material, sufficient for one table

37.38



ET0771

2-component glide element-castor combination

for chipboard table top (19 mm and 25 mm)

for all EcoTables with 2 shortened legs for fitting castors

Contents: Glide elements and castors, with fixing material, sufficient for one table

31.16



ET0773

Plastic glide element-castor combination

for solid HPL top (13 mm)

for all EcoTables with 2 shortened legs for fitting castors

Contents: Glide elements and castors, with fixing material, sufficient for one table

24.93



ET0775

Felt glide element-castor combination

for solid HPL top (13 mm)

for all EcoTables with 2 shortened legs for fitting castors

Contents: Glide elements and castors, with fixing material, sufficient for one table

37.38



ET0774

2-component glide element-castor combination

for solid HPL top (13 mm)

for all EcoTables with 2 shortened legs for fitting castors

Contents: Glide elements and castors, with fixing material, sufficient for one table

31.16



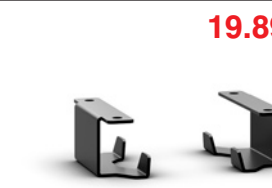
ET0670

Satchel hook set

for all EcoTables, including fixing material

Contents: 4 units for 2 two-seaters or 4 one-seaters

19.89



ET0033

Storage basket set with angled back

for EcoTable without frame on user side

Contents: 2 units, with fixing material

25.52



ET0583

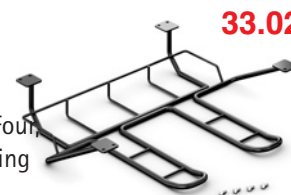
Chair suspension for chipboard table top (19 mm and 25 mm)

for EcoTable without frame on user side

for Students' chairs of all sizes:: JUMPER Air/Ply Move, JUMPER Air/Ply Active, JUMPER Air/Ply Four, PantoMove-LuPo/-VF, PantoSwing-LuPo/-VF, Compass-LuPo/-VF, NF-Move, NF-Compass, NF-Swing

Contents: 1 unit, with fixing material

33.02



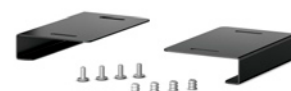
ET0450

PantoMove-LuPo suspension rail for chipboard table top (19 mm and 25 mm)

for EcoTable without frame on user side

Contents: 1 set for 1 chair, with fixing material for prepared chipboard table top

23.68



ET0848

Universal suspension rail for chipboard table top (19 mm and 25 mm)

for EcoTable without frame on user side

for Students' chairs of all sizes: LuPoGlide, LuPoGlide-Comfort, BasicGlide, BasicGlide-Comfort, LuPoTurn, LuPoTurn-XL, BasicTurn, BasicTurn-XL, JUMPER Air Move, PantoMove-LuPo, NF-Move

Contents: 1 unit (two-part), with fixing material

23.68



ET0988

Gratnells guide set for EcoTable, white

for all models with prepared frame

Contents: 1 unit (two-part), with fixing material

7.54



ET1020

Gratnells guide set for EcoTable, black

for all models with prepared frame

Contents: 1 unit (two-part), with fixing material

7.54



ET0790

Plastic box with integrated pull-out protection (7.5 cm high)

Generation: from 2021

Colours, see last page

10.99



ET0789

Plastic box with integrated pull-out protection (15 cm high)

Generation: from 2021

Colours, see last page

14.29



ET0509**Metal cable outlet matt-chrome-plated**

for chipboard table top (25 mm)
for all EcoTables with drill hole for cable outlet
Contents: 1 unit with circular bush

21.27

ET0795**Metal cable outlet matt-chrome-plated**

for chipboard table top (19 mm)
for all EcoTables with drill hole for cable outlet
Contents: 1 unit with circular bush

21.27

65-1105-61**Metal cable outlet matt-chrome-plated**

for solid HPL top (13 mm)
for all EcoTables with drill hole for cable outlet
Contents: 1 unit

21.19

ET0798**Table connector**

for all EcoTables
Contents: 10 units, with fixing material

24.93

ET0780**Grid-type cable channel 60.7 cm for type 80 table**

for model: 23105, 23106, 23110, 23111, 23167, 23170, 23171, 23172, 23177, 23181, 23182, 23187, 23191, 23197
for model: Trapezoidal/semicircular tables (short side): 23114, 23115, 23178, 23179, 23188, 23189
for model: Trapezoidal/semicircular tables (long side): 23114, 23115
Contents: 1 unit, with fixing material

62.30

ET0781**Grid-type cable channel 100.7 cm for type 120 table**

for model: 23107, 23108, 23113, 23173, 23183, 23193
for model: Trapezoidal/semicircular tables (long side): 23178, 23179
Contents: 1 unit, with fixing material

74.76

ET0782**Grid-type cable channel 120.7 cm for type 140 table**

for model: 23164, 23167, 23174, 23177, 23184, 23187, 23194, 23197
for model: Trapezoidal/semicircular tables (long side): 23188, 23189
Contents: 1 unit, with fixing material

79.74

ET0783**Grid-type cable channel 140.7 cm for type 160 table**

for model: 23165, 23175, 23185, 23195
Contents: 1 unit, with fixing material

103.42

ET0784**Grid-type cable channel 160.7 cm for type 180 table**

for model: 23166, 23176, 23186, 23196
Contents: 1 unit, with fixing material

110.89

ET0397

25,52

Cylindrical lever lock with inner cylinder and set of keys

for Teachers' tables: with substructure consisting of a drawer and body with door

for model: 23120, 23122, 23130, 23132, 23133, 23135

(Please specify the corresponding key numbers)

with locking system: 18001-18500 (1x fixed, 1x flip)

with locking system: 4001-4099 (2x fixed)

Contents: 1 unit, with fixing material



ET0542

30.10

Cylindrical lever lock (shaft length 27 mm) with internal cylinder and set of keys

for Teachers' tables: with 4-drawer base cabinet

for model: 23121, 23131, 23133, 23134

(Please specify the corresponding key numbers)

with locking system: 18001-18500 (1x fixed, 1x flip)

with locking system: 4001-4099 (2x fixed)

Contents: 1 unit, with fixing material



ET0424

12.99

Hinge

for Teacher's table: with door

for model: 23122, 23132, 23133, 23135

Contents: 1 unit with fixing material



ET0282-K

6.76

Plastic bow handle (W = 128 mm)

dark-grey, light-grey or Nevada beige

for model: 23120, 23121, 23122, 23130, 23131, 23132, 23133, 23134, 23135

Contents: 1 unit, with fixing material



ET0282-M

11.18

Metal bow handle (W = 128 mm)

chrome- or nickel-plated

for model: 23120, 23121, 23122, 23130, 23131, 23132, 23133, 23134, 23135

Contents: 1 unit, with fixing material



ET0983-K

4.72

Inset handle (W = 125mm)

dark-grey, light-grey or Nevada beige

for model: 23120, 23121, 23122, 23130, 23131, 23132, 23133, 23134, 23135

Contents: 1 unit, with fixing material



ET0983-M

8.84

Inset handle (W = 125 mm)

nickel-plated

for model: 23120, 23121, 23122, 23130, 23131, 23132, 23133, 23134, 23135

Contents: 1 unit, with fixing material



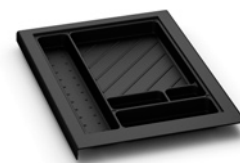
80-469-00

Materials tray for drawers

for model: 23120, 23121, 23131, 23133, 23134

Contents: 1 unit

16.21



ET0192

Insertable shelf carrier for row of ø 5 mm drill holes

with 2 pins including pull-out protection

for model: 23122, 23132, 23133, 23135

Contents: 32 units (4 per shelf)

13.76



23220

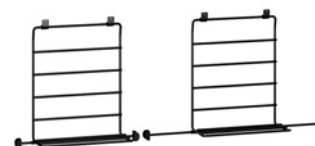
CPU holder

For table depth 60 – 80 cm or 81 – 100 cm (please specify table depth)

for all EcoTables

Contents: 1 unit, with fixing material

56.28



ET0963

Holder set for CPU holder

for model: 23220

Contents: 2 units with fixing material

12.34



ET0964

Fixing set, short, for CPU holder

for table depth 60 – 80 cm

for model: 23220

Contents: 2 units in metallic colour 059 arctic

16.21



ET0965

Fixing set, long, for CPU holder

for table depth 81 – 100 cm

for model: 23220

Contents: 2 units in metallic colour 059 arctic

16.21



ET0821

Table top fixing set

for chipboard table top (19 mm and 25 mm)

for all EcoTables

Contents: 50x screws and caps

7.48



ET0822

Table top fixing set

for solid HPL top (13 mm)

for all EcoTables

Contents: 50x screws and caps

7.48



ET1024

Fixing set for EcoTable screen

Contents: 1 set, sufficient for one screen

17.38



**Plastic colour:
Gratnells**



015, 025 anthracite



016, 026 translucent



030, 040 dark red (NCS S 2570-R)



031, 041 dark blue (NCS S 6030-R80B)



032, 042 light blue (NCS S 1040-R90B)



033, 043 light green (NCS S 1070-G60Y)



001, 011, 021 red (RAL 3020)