



Spare parts order form

Serie 800 Cabinet doors

For our wardrobe series, we are always guided by the ideas specified by our customers. In doing so, we can manufacture your wardrobes individually for you. For reordering shelves, we therefore need some important information. This enables us to make sure that the delivered shelf fits your wardrobe.

The order number (AB) and model number are important for us, as these enable us to identify our wardrobes and their versions precisely. If you do not find these on the sticker attached to our piece of furniture, we ask you to also fill in the additionally requested properties.

Note:

To identify your model, please note the sticker on the cabinet, container, rack or sideboard with the order number (AB), model number and delivery week (LW). On older models, the sticker may also be on the back. On older models, the sticker may also be on the back.

MOD 21512
AB 5898252/00010C
POS 1
LW 08/11
Tauberbischofsheim

Please note: Doors can no longer be manufactured and supplied for the 8000 cabinet series (delivered before 2004).

Serie 800 from 2012

44000-44975

47400-47989

Serie 80000 2004-2012

80110-80822

Please note the following markings:

blue = product family no longer available

Please contact us if you are unsure of the cupboard series:

Please feel free to send us pictures of the wardrobe if you are unsure which series it is. Pictures of the complete wardrobe, fitted shelf and shelf support are particularly helpful.

Spare parts order form

Fax to 09341 887777 or e-mail to ersatzteil@vs-moebel.de

Delivery address:

School/Company
Contact name
Street address
Postcode/Town
Contact phone
Customer No. ¹⁾

1) if available

Billing Recipient/Customer: (if different)

School/Company
Contact name
Street address
Postcode/Town
Contact phone
Customer No. ¹⁾

Your reference:

Order number (AB):

Article Number:

Model Number:

Delivery week:

Is it the left, right or both doors?

For one door:

Is the door hinged on the right or left?

For a compartment cabinet:

What is the exact position of the door?

I would like to request the cabinet door/s in the version supplied at the time.

If you can no longer find a sticker on the cabinet or if you would like the cabinet door in a different version, please fill in the following list.
If you are retrofitting doors to a shelving unit, please also fill in the following list.

Total cabinet dimensions (W/D/H):

Door dimensions (W/D/H):

Door decor (Colours see last page):

Edge colour:

Deviating colour for striking strip (left door):

For the selection of the next variants, please note the spare parts shown on the following pages.
For this, enter the specified spare parts number in the field.

Hinge version:

Handle version:

Lock version:

Lock number:

Date:

Signature:

Variant 1: Serie 800

ET0268 9.53

Hinge visible 270° with projection 15 mm

Contents: 1 unit, with fixing material



ET0276 9.53

Hinge visible 230° with projection 5.5 mm

for compartment cabinets, for doors opening on the outside

Contents: 1 unit, with fixing material



ET0269 9.53

Concealed hinge 110° with projection 15 mm

Contents: 1 unit, with fixing material



ET0270 9.53

Concealed hinge 110° with projection 5.5 mm

for compartment cabinets, for doors opening on the outside

Contents: 1 unit, with fixing material



48538 21.06

Opening limiter 90° for visible hinge

for visible hinge

Contents: 1 unit, with fixing material>



48539 14.53

Opening limiter 90° for concealed hinge

for concealed hinge

Contents: 1 unit



48495 23.54

Clothing protector (white)

for visible hinge

Contents: 1 unit



ET0830 12.69

Door hinge support kit

for all hinges of the Serie 800

Contents: 10 units, with fixing material



Variant 2: Serie 80000

ET0361 9.53

Hinge visible 270° with projection 15 mm

Material no. on hinge: M6060001 and M8040503

Contents: 1 unit, with fixing material



ET0363 9.53

Hinge visible 270° with projection 5.5 mm

for compartment cabinets, for doors opening on the outside

Material no. on hinge: M6060001 and M8010201

Contents: 1 unit, with fixing material



ET0830 12.69

Door hinge support kit

for all hinges of the Serie 80000

Contents: 10 units, with fixing material



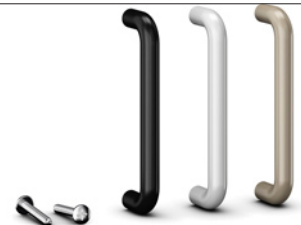
Variant 1 & 2: Serie 800 & 80000

ET0403-K 4.68

Plastic handle (W = 96 mm)

black-grey, light grey or nevada beige

Contents: 1 unit, with fixing material



ET0403-M 8.88

Metal handle (W = 96 mm)

nickel-plated or chrome-plated

Contents: 1 unit, with fixing material

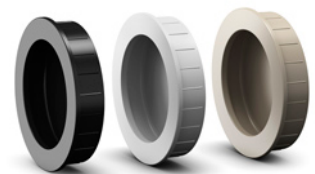


ET0408-K 4.80

Recessed handle (W = 125 mm)

black-grey, light grey or nevada beige

Contents: 1 unit



ET0408-M 9.00

Recessed handle (W = 125 mm)

nickel-plated

Contents: 1 unit



ET0453 11.35

Furniture handle

with 3 O-rings

Contents: 1 unit, with fixing material



Cover stickers for decals 6.93

black, beige, grey-white, (D = 16 mm)

Content: 30 pieces

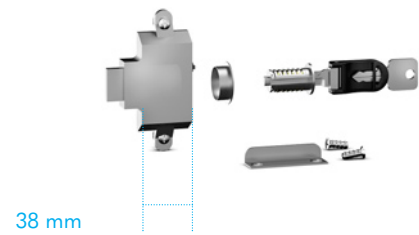


Variant 1 & 2: Serie 800 & 80000

ET0441 25.98

Rim lock D25

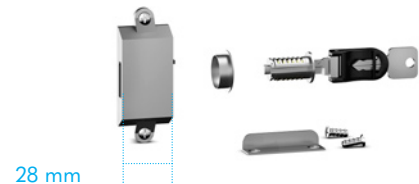
with internal cylinder and key set
with round drill plate for compartment cabinets, for doors opening onto the middle side
with locking system 18001-18500 (1x fixed, 1x hinged)
with locking system 4001-4099 (2x fixed)
Contents: 1 unit, with fixing material (Please state the appropriate key numbers)



ET0444 25.98

Rim lock D15

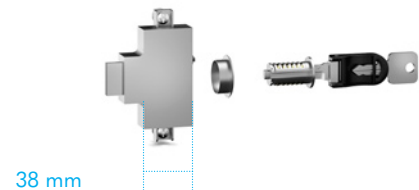
with internal cylinder and key set
with round drill plate for compartment cabinets, for doors opening onto the outside
with locking system 18001-18500 (1x fixed, 1x hinged)
with locking system 4001-4099 (2x fixed)
Contents: 1 unit, with fixing material (Please state the appropriate key numbers)



ET0423 27.04

Espagnolette lock D25

with internal cylinder and key set
with square drill plate to accept espagnolette rods
with locking system 18001-18500 (1x fixed, 1x hinged)
with locking system 4001-4099 (2x fixed)
Contents: 1 unit, with fixing material (Please state the appropriate key numbers)



ET0422 28.37

Espagnolette lock D15

with internal cylinder and key set
with square drill plate to accept espagnolette
with locking system 18001-18500 (1x fixed, 1x hinged)
with locking system 4001-4099 (2x fixed)
Contents: 1 unit, with fixing material (Please state the appropriate key numbers)



ET0557 41.43

Hinge with espagnolette lock D25

with internal cylinder and key set
Please state whether required for right or left hinged door
with locking system 18001-18500 (1x fixed, 1x hinged)
with locking system 4001-4099 (2x fixed)
Contents: 1 unit, with fixing material (Please state the appropriate key numbers)



ET0558 41.43

Hinge with espagnolette lock D15

with internal cylinder and key set
Please state whether required for right or left hinged door
with locking system 18001-18500 (1x fixed, 1x hinged)
with locking system 4001-4099 (2x fixed)
Contents: 1 unit, with fixing material (Please state the appropriate key numbers)



ET0674-Fix 44.41

Combination lock D25

for compartment cabinets, for doors opening on the middle side
with fixed code for use with personal lockers
Please state whether required for right or left hinged door
Contents: 1 unit, with fixing material



ET0673-Fix 44.41

Combination lock D15

for compartment cabinets, for doors hinged on the outside
with fixed code for use with personal lockers

Please state whether required for right or left hinged door

Contents: 1 unit, with fixing material



ET0674-Free 44.41

Combination lock D25

for compartment cabinets, for doors hinged on the centre side
with freely selectable code for each use

Please state whether required for right or left hinged door

Contents: 1 unit, with fixing material



ET0673-Free 44.41

Combination lock D15

for compartment cabinets, for doors hinged on the outside
with freely selectable code for each use

Please state whether required for right or left hinged door

Contents: 1 unit, with fixing material



Variant 1: Serie 800

ET0275 12.48

Espagnolette set 6 OH

Contents: espagnolettes (1297 mm and 877 mm), with fixing material



ET0274 10.36

Espagnolette set 5 OH

Contents: espagnolettes (922 mm and 877 mm), with fixing material



ET0273 9.19

Espagnolette set 4 OH

Contents: espagnolettes (877 mm and 547 mm), with fixing material



ET0272 8.44

Espagnolette set 3 OH

Contents: espagnolettes (877 mm and 172 mm), with fixing material



ET0271 7.08

Espagnolette set 2 OH

Contents: espagnolettes (502 mm and 172 mm), with fixing material



ET1083 9.19

Espagnolette set for add-on cabinet 4 OH

Contents: espagnolettes (1297 mm und 126 mm), with fixing material



ET1082 8.44

Espagnolette set for add-on cabinet 3 OH

Contents: espagnolettes (922 mm und 126 mm), with fixing material



ET0347 7.08

Espagnolette set for add-on cabinet

Contents: 547 mm and 126 mm bent bars, with fixing material



ET0346 27.90

Accessories for espagnolette set

Contents: 5 hooks top, 5 hooks bottom, 10 bolts with sleeves



Variant 2: Serie 80000

ET0414 12.48

Turn bar set 6 OH

Contents: espagnolettes (1274 mm and 899 mm), with fixing material



ET0415 10.36

Espagnolette set 5 OH

Contents: espagnolettes (899 mm and 899 mm), with fixing material



ET0416 9.19

Espagnolette set 4 OH

Contents: espagnolettes (899 mm and 524 mm), with fixing material



ET0417 8.44

Espagnolette set 3 OH

Contents: espagnolettes (899 mm and 149 mm), with fixing material



ET0418 7.08

Espagnolette set 2 OH

Contents: espagnolette (524 mm and 524 mm), with fixing material



ET0346 27.90

Accessories for espagnolette set

Contents: 5 hooks top, 5 hooks bottom, 10 bolts with sleeves



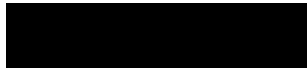
Chipboard/MDF/HPL:



017 astral silver



018 anthracite



019 plain black (NCS S 9000-N)



027 natural beech laminate



028 natural maple laminate



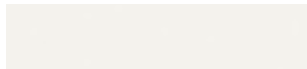
029 natural walnut laminate



031 grey white (RAL 9002)



035 andes grey (RAL 7035)



328 white



340 natural oak laminate



415 terra grey (NCS S 4005-Y50R)