

http://links.vs-service.com/downloads/70-363_V02_DEEN_NF-Move-Export.pdf

Montageanleitung

NF-Move Export


Models 32500-32510


Intended use: These chair models have been designed and are suitable for use in educational establishments. No liability will be assumed for any use other than that intended, for example in workshops, storage rooms or damp locations. To be used in closed premises only.

General note on reading and retaining these Instructions:

Before using the products, read these instructions carefully and pay special attention to the safety instructions. Keep these Instructions for future consultation and communicate them to other users.

General note on safety: The following symbols and notes are used in these Instructions:

 **Important!** This symbol indicates an important assembly note.

 **Caution!** This symbol indicates a very important note.

On the Web: These Instructions are also available online for download via the link indicated at the top of the page.

Standards: Tested in accordance with DIN EN 1729 - 1/2.

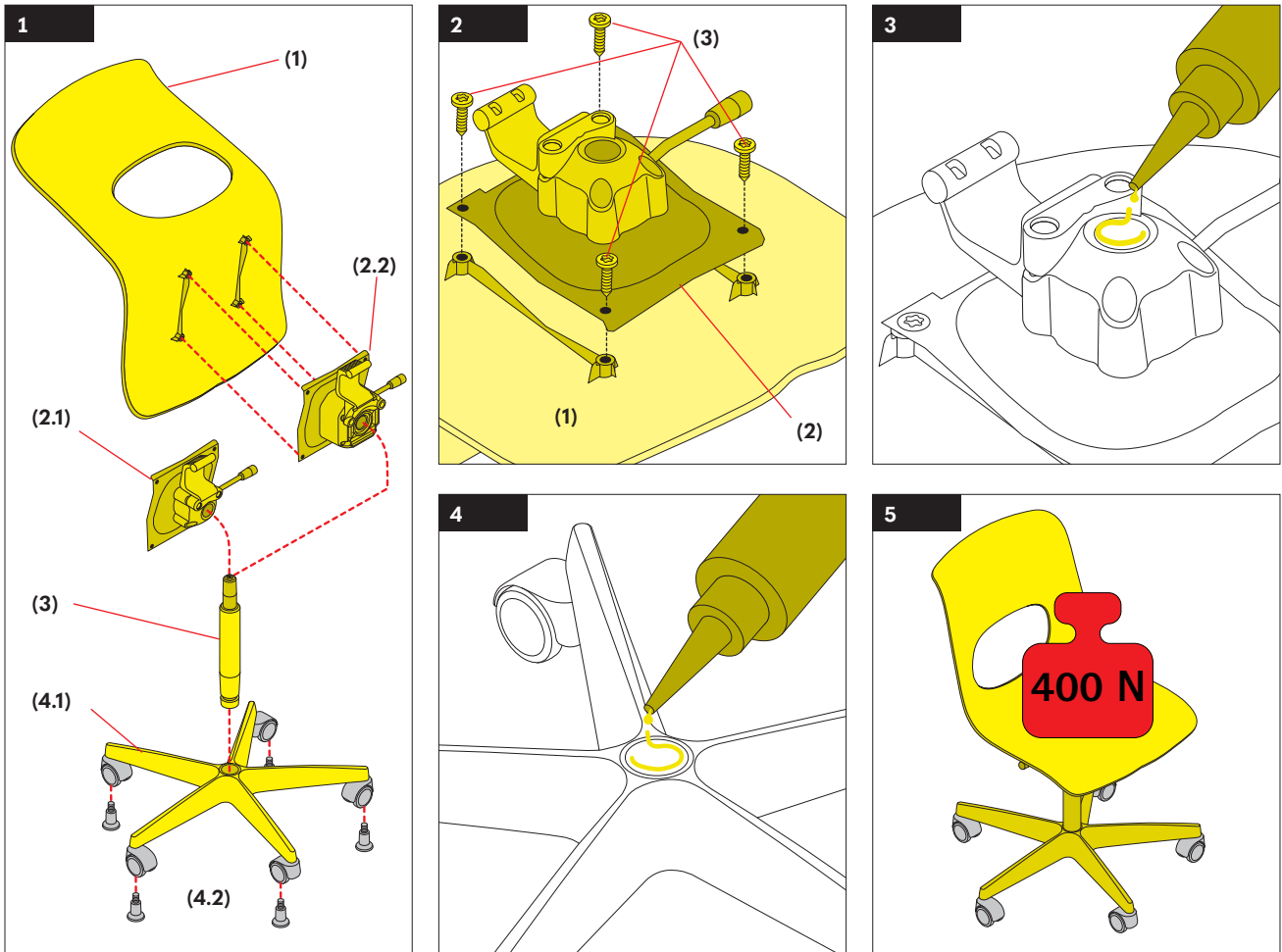
Scope of delivery: The products are supplied partially assembled.

Faults and service: If any faults occur, please contact our Customer Service: kundenservice@vs-moebel.de

Maintenance and cleaning:

On the Internet: vs.de/kataloge/reinigung/en

Transfer/disposal: If the product is transferred to another party then it must be accompanied by these Instructions. For information on the environmentally responsible disposal of the product, please contact your relevant local authority department.



Modell 32500

(Figure 1)

Components:

- Seat shell (1)
- Seat support - rigid (2.1)
- Seat support with 3D rocker (2.2)
- Fixing material - 4 M6x12 screws (not pictured)
- Gas spring (3)
- Star foot with pre-mounted castors (4.1)
- Star foot with pre-mounted slide elements (4.2)
- Adhesive (not pictured)

Caution! The components must not be swapped between the different chairs.

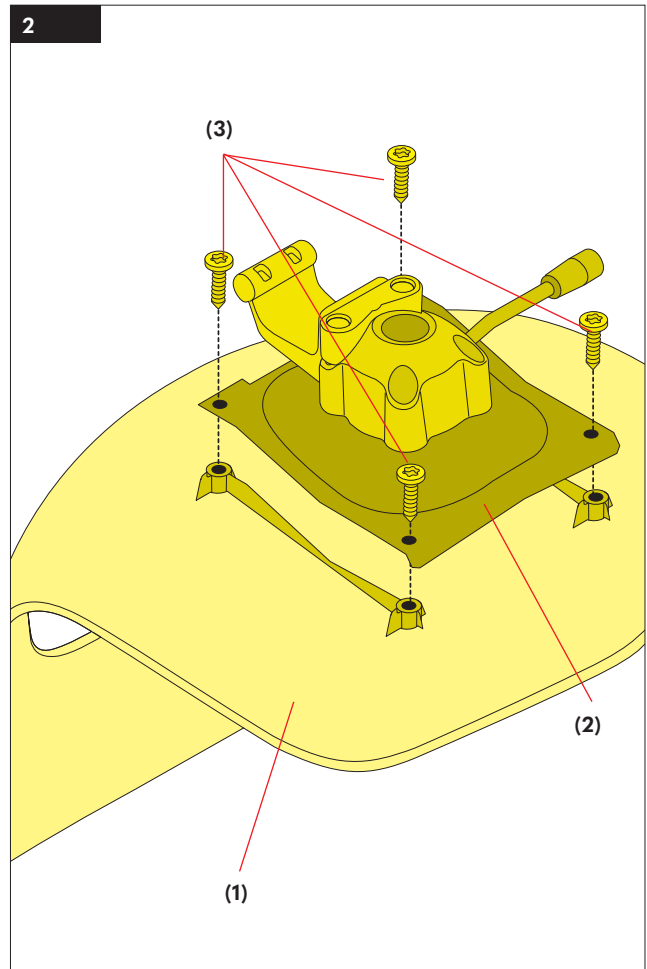
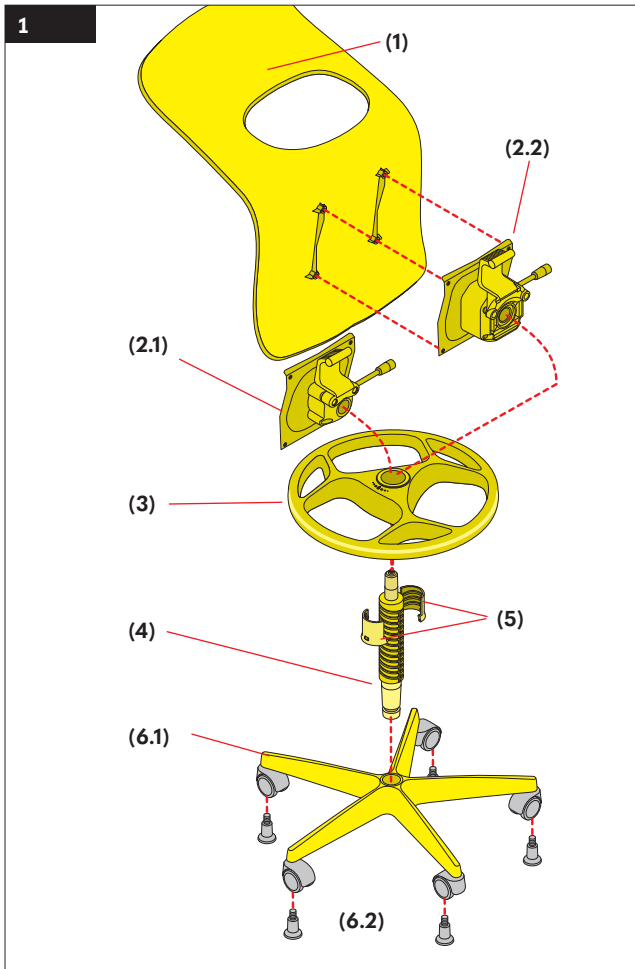
Preparing for assembly: Degrease the top cone of the gas spring (3) using a suitable cleaning agent.

Fixing the seat shell to the seat support (Figure 2): Place the seat support (2) on the seat shell (1) and join together firmly using the supplied screws (3).

Caution! The torque of the screws is 5.2 Nm!

Assembling the chair components (Figures 3/4/5): Clean the cone of the seat (Figure 3) and the star foot (Figure 4) Apply the supplied adhesive over a length of approx. 4-5 cm at both points. Join the parts together and place a load of 400 N on the seating surface for at least 5 seconds (Figure 5).

Caution! The adhesive must dry thoroughly. Wait for 24 hours before subjecting the chair to its full load.



Modell 31510 (Figure 1)

Components:

- Seat shell (1)
- Seat support - rigid (2.1)
- Seat support with 3D rocker (2.2)
- Fixing material - M6x12 screws (not pictured)
- Foot ring (3)
- Gas spring with guide tube (4)
- Adapter (5)
- Star foot with pre-mounted castors (6.1)
- Star foot with pre-mounted slide elements (6.2)
- Adhesive (not pictured)

Fixing the seat shell to the seat support (Figure 2): Place the seat support (2) on the seat shell (1) and join together firmly using the supplied (3).

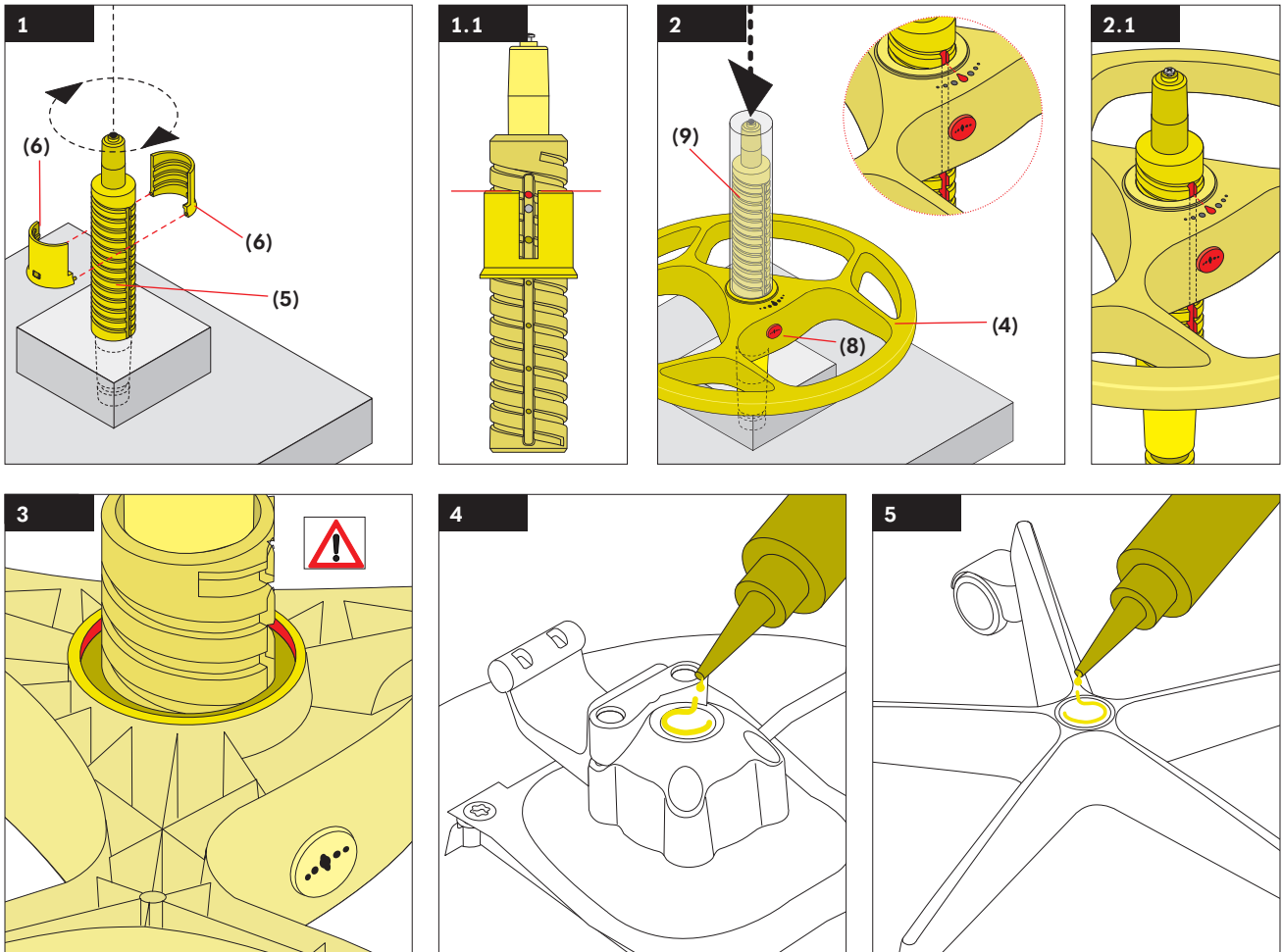


Caution!

The torque of the screws is 5.2 Nm!



Caution! The components must not be swapped between the different chairs



Pre-assembling the gas spring and adapter

(Figure 1)

Place the gas spring (5) in the mechanism and adjust. Attach the halves of the adapter (6). When you do this, the guide groove of the adapter must be visible in the slot in the adapter and the top edge of the adapter must be level with the topmost hole in the guide groove (Figure 1.1).

Pre-assembling the gas spring and foot ring

(Figure 2)

Place the gas spring with the adapter in the mechanism and position the foot ring (4) on it. When doing this, keep button (8) pressed in.

Caution! The marking on the top of the ring must point toward the guide groove (Figure 2.1).

The foot ring is pushed over the adapter until it engages by striking a surrounding tube (9) once or twice with a hammer.

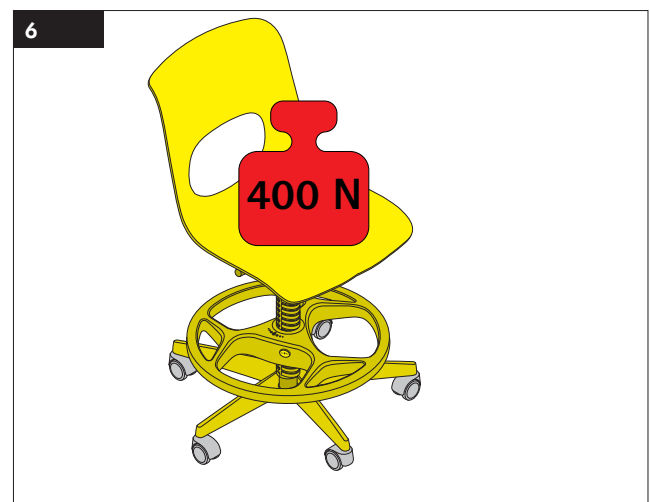
Caution! Check the underside of this assembly carefully! There must be an identifiable offset between the foot ring and the adapter (Figure 3). If this is not the case, push the foot ring further onto the adapter.

Assembling the chair components

(Figures 4/5/6)

Degrease the top cone of the gas spring (5) using a suitable cleaning agent. Clean the cone of the seat support (Figure 4) and the star foot (Figure 5). Apply the supplied adhesive over a length of approx. 4-5 cm at both points.

Join the parts together firmly and place a load of 400 N on the seating surface for at least 5 seconds (Figure 6).



Caution! The adhesive must dry thoroughly. Wait for 24 hours before subjecting the chair to its full load.