



# REFERENCES



Creating truly flexible learning environments is a vital consideration for modern learning cultures within schools. As a comprehensive educational furniture supplier, VS provides ergonomic product solutions that enable multiple configuration and adjustment options to do just that.

By seamlessly integrating ergonomics, adaptable furniture, layout and room function, VS products allow learning environments to be highly flexible, yet remain structured and coordinated. This is an important interaction for pupils of all ages to promote well-being and bolster academic success.

Buckingham County Primary & Elementary	pg. 6
The New Angelos Law Center	pg. 16
Redding School of the Arts	pg. 20
Aspen Country Day School	pg. 26
Lincoln Middle School	pg. 34
The Heschel School	pg. 40
Douglas Park Elementary	pg. 44
Barrow Elementary	pg. 50
Arcola Community School	pg. 56

# REFERENCES

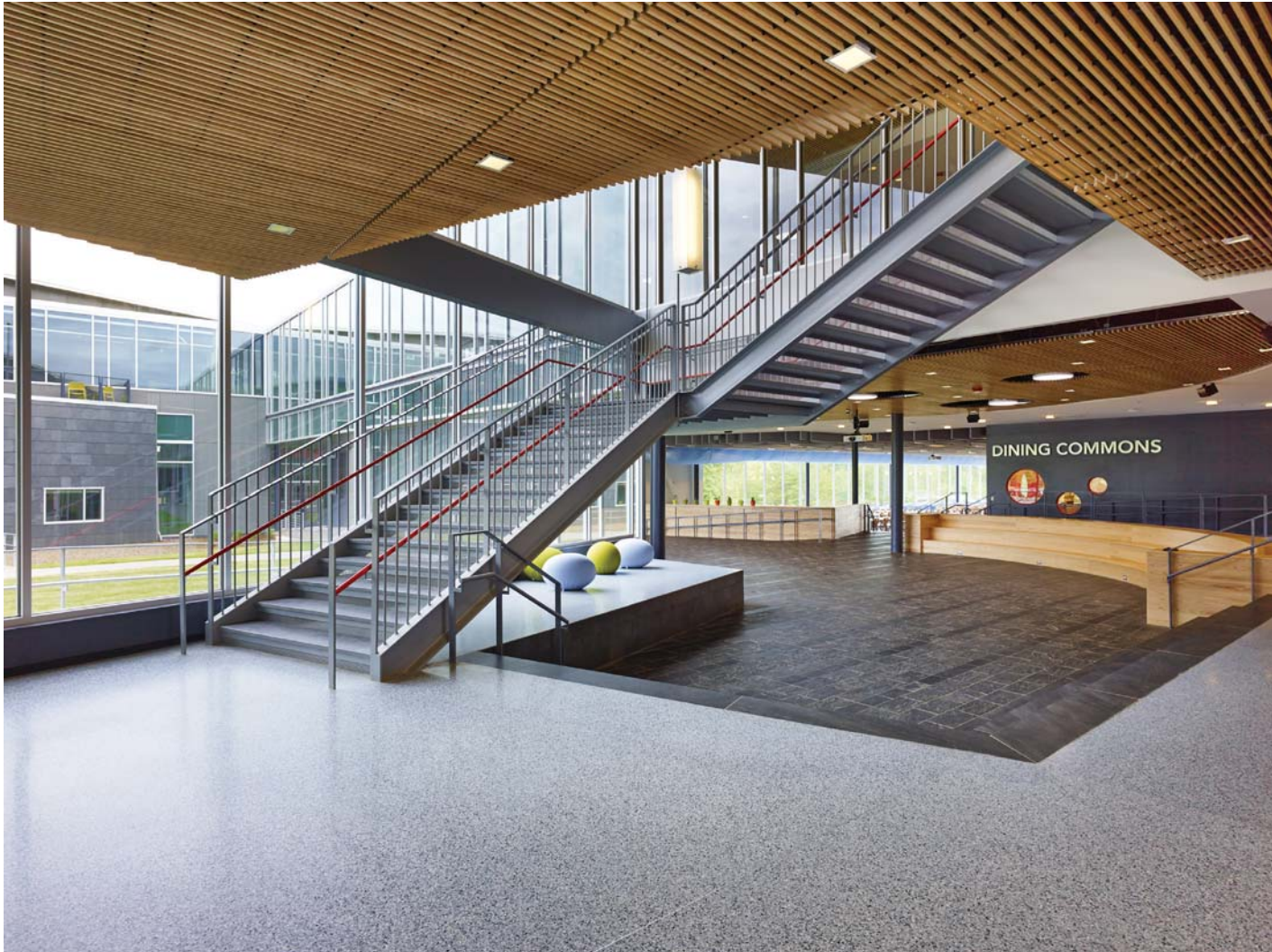




Architect: **VMDO Architects** | Photos: © Alan Karchmer

Buckingham County Primary & Elementary Schools | Dillwyn, VA



















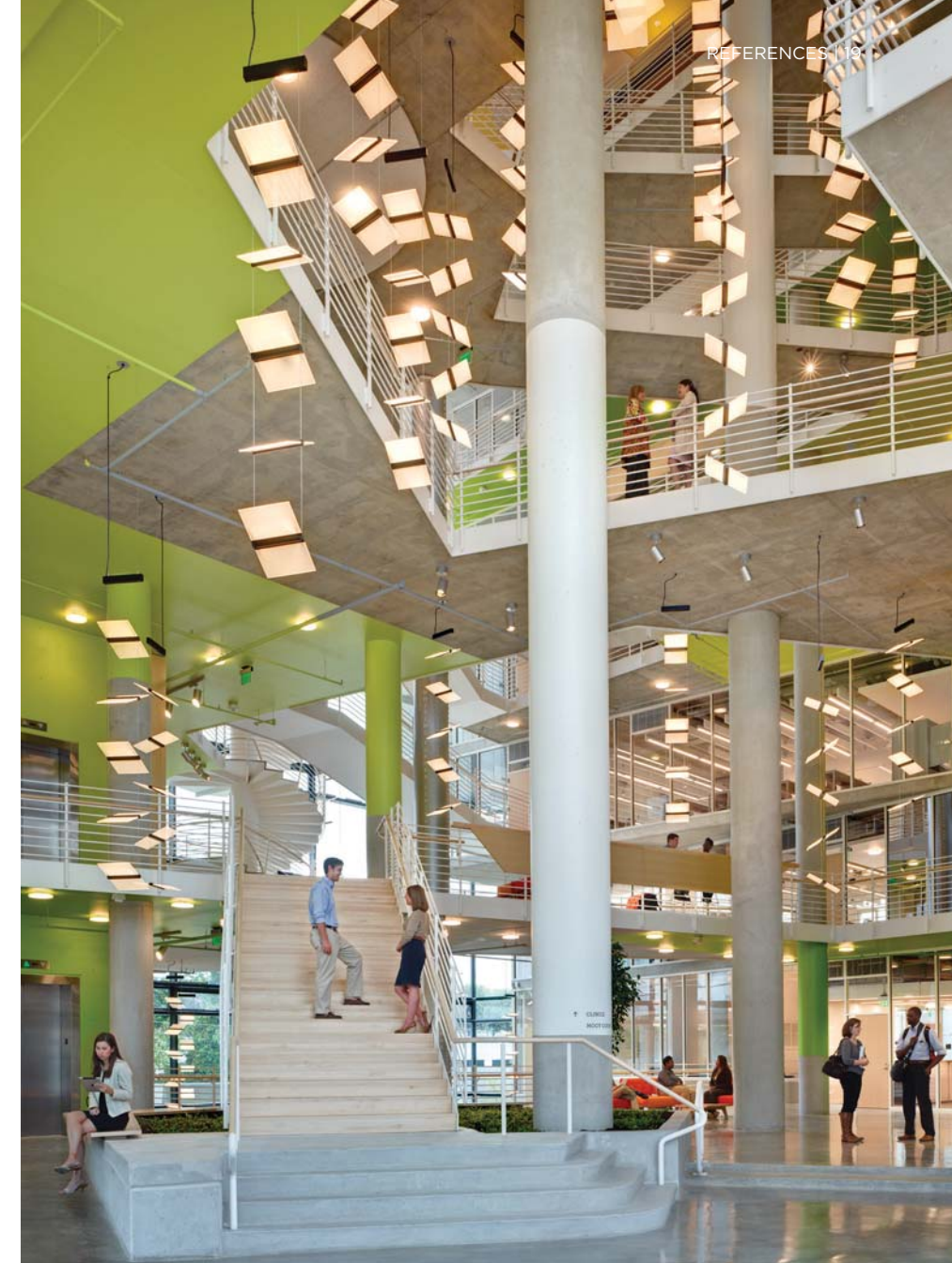
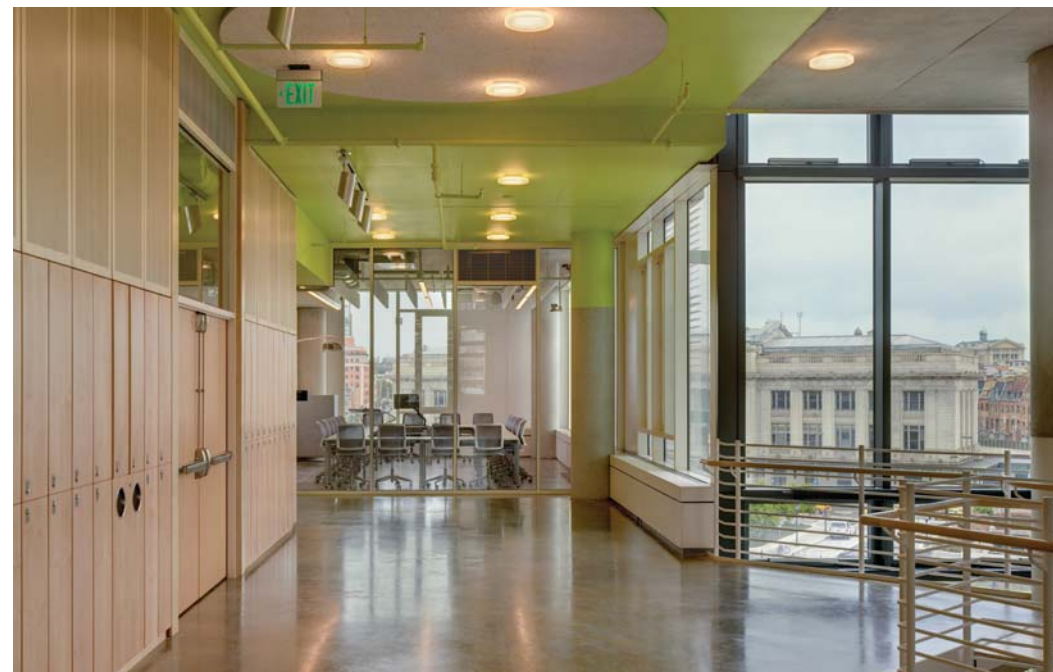


The New Angelos Law Center | Baltimore, MD



Architect: **Behnisch Architekten** | Photos: © Brad Feinknopf









Redding School of the Arts | Redding, CA



Architect: **Trilogy** | Photos: © Steve Whittaker















Aspen Country Day School | Aspen, CO

Architect: **Harry Teague Architects** | Photos: © Brent Moss











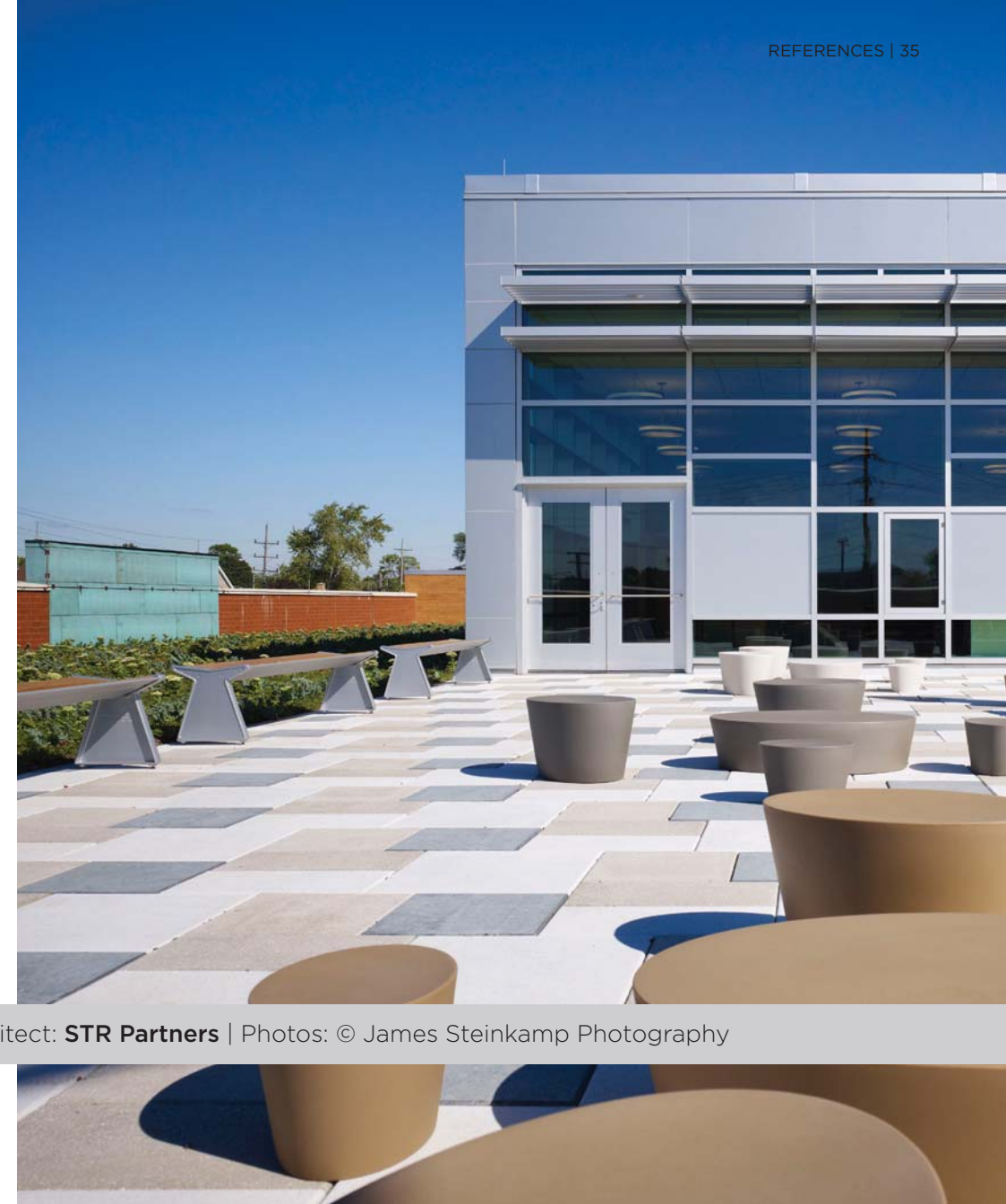








Lincoln Middle School | Schiller Park, IL



Architect: **STR Partners** | Photos: © James Steinkamp Photography













The Heschel School | New York, NC



Architect: **Gruzen Samton Architects** | Photos: © Paul Warchol Photography





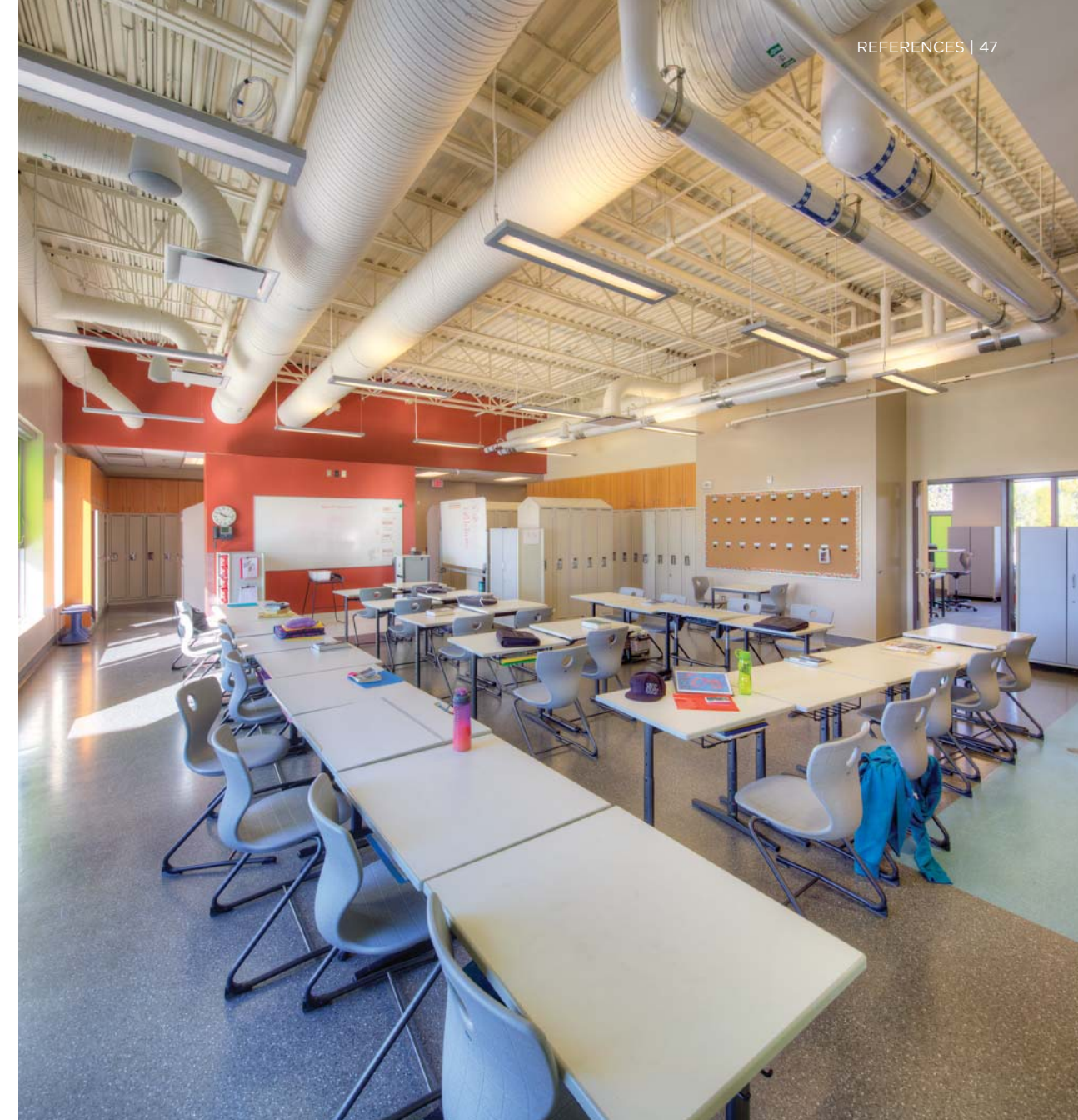




Douglas Park Elementary | Regina, Canada

Architect: **Number 10 & Fielding Nair International** | Photos: © Gerry Kopelow













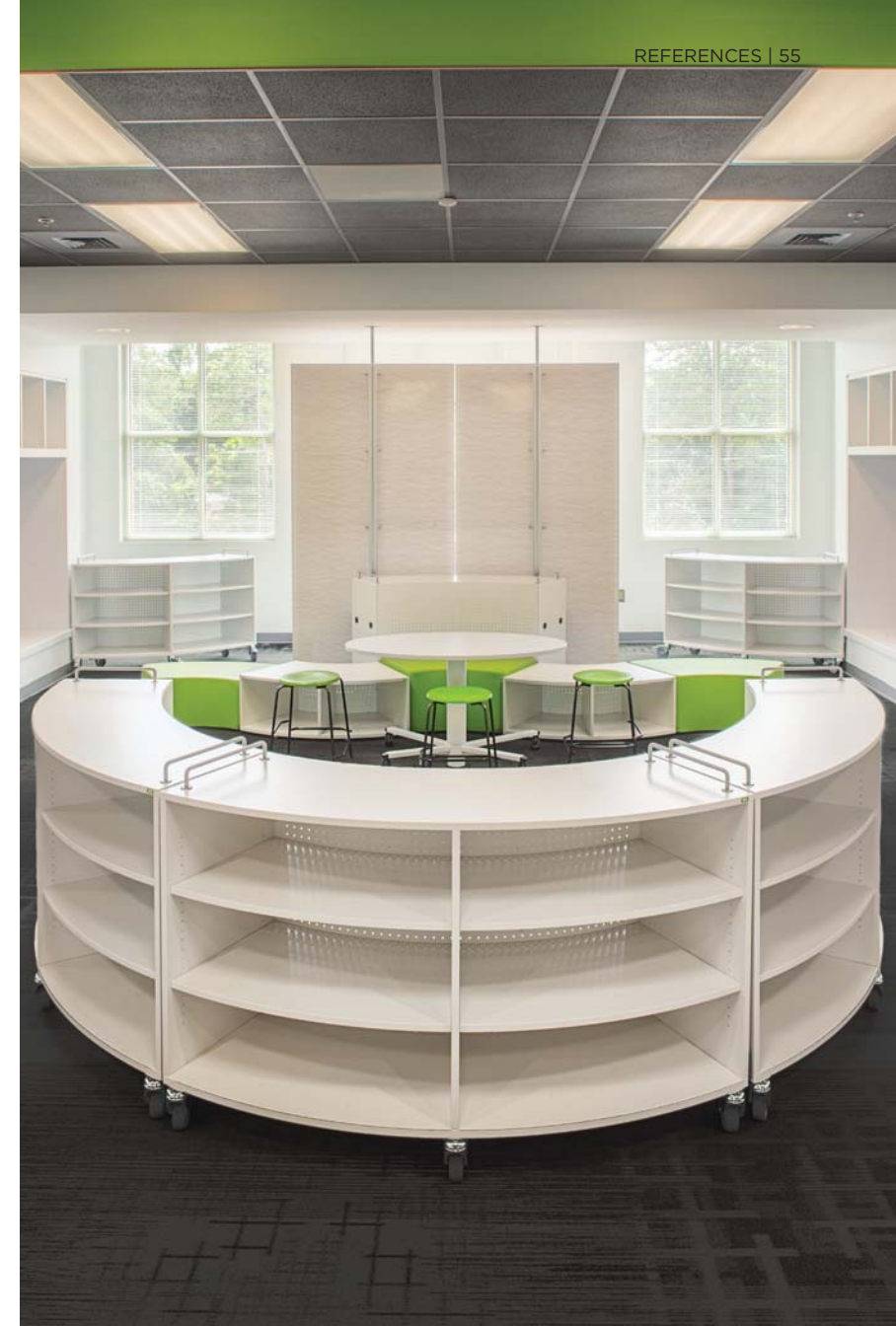
DAVID C. BARROW ELEMENTARY SCHOOL

Architect: **SP Design Group** | Photos: © Sean Busher













Arcola Community School | Regina, Canada



Architect: **P3 Architecture & Fielding Nair International** | Photos: © Patricia Holdsworth







VS furniture is not only satisfies the highest quality, durability and ergonomic requirements for flexibility, but also takes into account environment-related considerations through the company's manufacturing processes. Conserving natural resources is an important consideration and acts as our guiding principle throughout the entire product development cycle. From incoming raw materials, through processing and manufacturing, right up to the delivery of the furniture to the customer.









**VS America, Inc.:**

**1940 Abbott Street  
Charlotte, NC 28203**

**Phone: 704-378-6500**

**Fax: 704-378-6005**

**[info@vs-charlotte.com](mailto:info@vs-charlotte.com)  
[www.vs-network.com](http://www.vs-network.com)  
[facebook.com/vsamericainc](https://facebook.com/vsamericainc)**